

From: [Matt Kales](#)
To: [Ivy Allen](#)
Cc: [Marla Trollan](#)
Subject: RE: Quick GrSG question
Date: Friday, May 02, 2014 10:25:52 AM

Thanks, Ivy. I recast the below information for the briefing Q&A as follows:

Q: What is the role of tribes in sage-grouse conservation?

A: Note: All answers are specific to Region 6 Tribes. There are approximately 17 tribes located within the sage-steppe habitat. We are currently working to determine which tribes are actively working on sage-grouse conservation and to determine what funding sources (e.g., BIA) tribes have applied to sage-grouse conservation. Lastly, as we move forward with our status review, we will determine potential approaches for active consultation processes with tribes (which would follow our guidelines – established pursuant to Secretarial order - that govern any FWS actions that could affect a tribe).

Sooner rather than later, we will need the information I originally outlined and I encourage you, and R6 EA, to work with the other FWS SG regions and ES (and Steve Torbit) to follow up on the below so the next time we brief Congress we can speak in a more informed and unified manner about engaging tribes in sagebrush country.

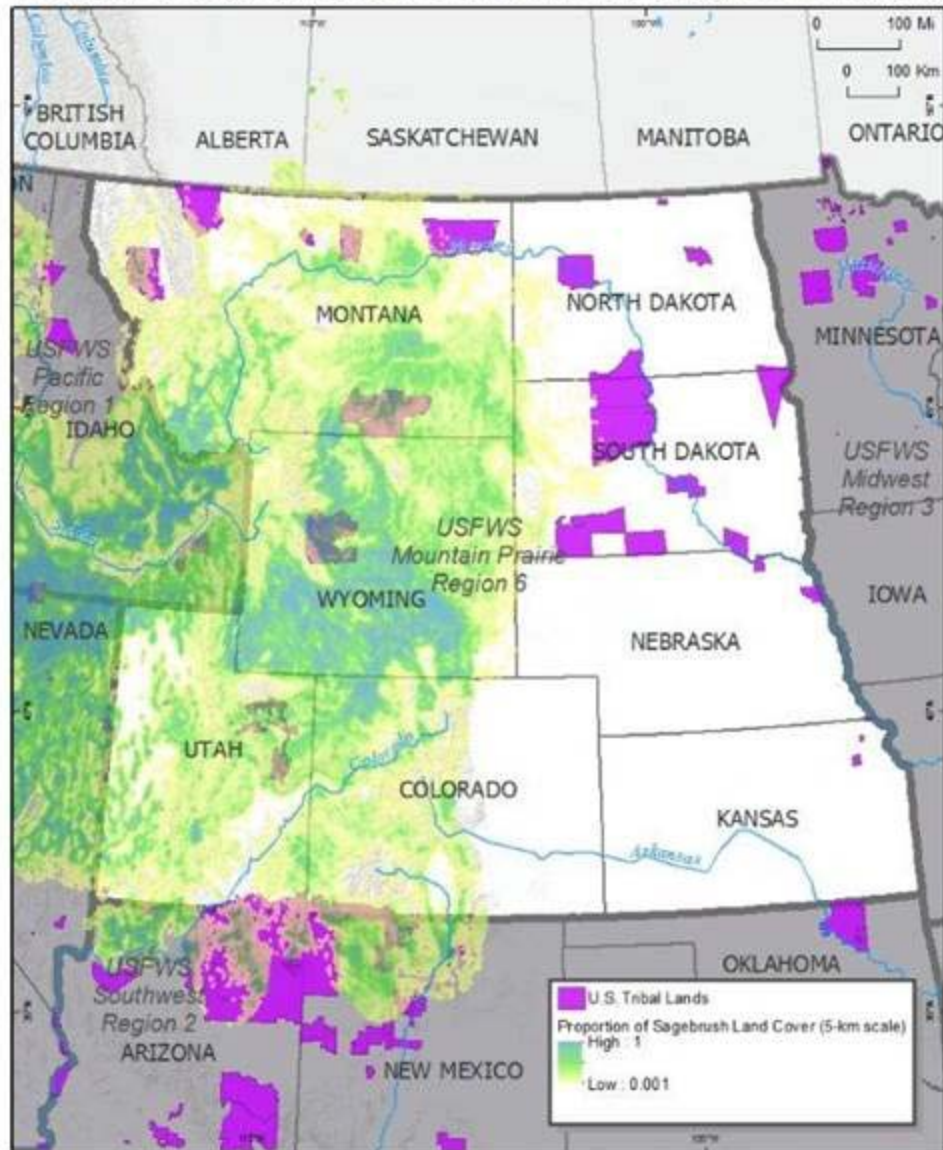
Matt

From: Ivy Allen [mailto:ivy_allen@fws.gov]
Sent: Friday, May 02, 2014 9:52 AM
To: Matt Kales
Cc: Marla Trollan
Subject: RE: Quick GrSG question

Q: What is the role of tribes in sage-grouse conservation?

A: All answers are specific to Region 6 Tribes. There are approximately 17 tribes located within the sage steppe habitat. Of those tribes we do not which ones are working on sage grouse conservation. None of these tribes have received funding to work on sage grouse through the FWS Tribal Wildlife Grant program. This species has not been discussed as a species of interest to tribes. There may be additional funding sources (NRCS, BLM, BIA) that tribes have used to work on sage grouse, in which case we would not be aware of funding or ongoing projects. To begin an active consultation process with tribes, you would follow the established rules that govern any Service actions that could effect a Tribe. For ESA specific actions and established guidelines see <http://www.fws.gov/endangered/what-we-do/tribal-secretarial-order.html>.

Proportion of Sagebrush Land Cover and U.S. Tribal Lands, USFWS Region 6



Map created by USFWS Region 6 Science Information Systems Section using data from the National Wetlands Inventory, 2001. Map Date: 2/1/2014. Source: National Wetlands Inventory, 2001. Data Source: National Wetlands Inventory, 2001. U.S. Tribal Lands: Indian Lands of the United States, 1980. Data Source: Bureau of Indian Affairs, 1980.